



ASPEN OneLiner Python IDE Setup Guide

This document provides examples of configuring the OneLiner Python Integrated Development Environment (IDE) first available in OneLiner V15.8.

Software requirements

- ASPEN OneLiner V15.8 or higher
- 32-bit Python 3.11

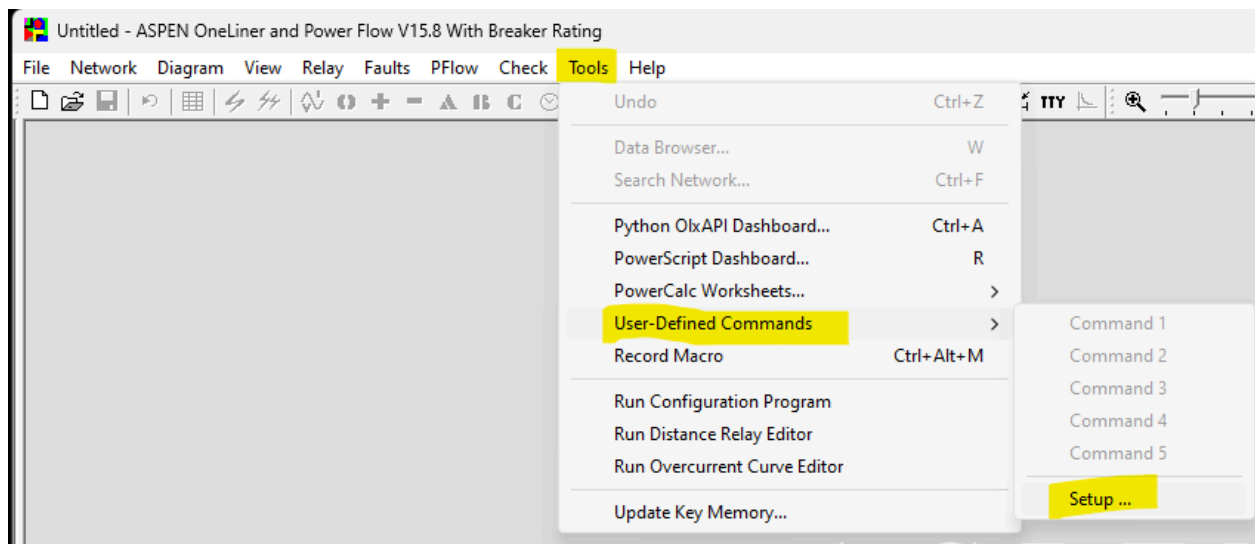
Additional details

Please address questions to ASPEN support at support@aspeninc.com.

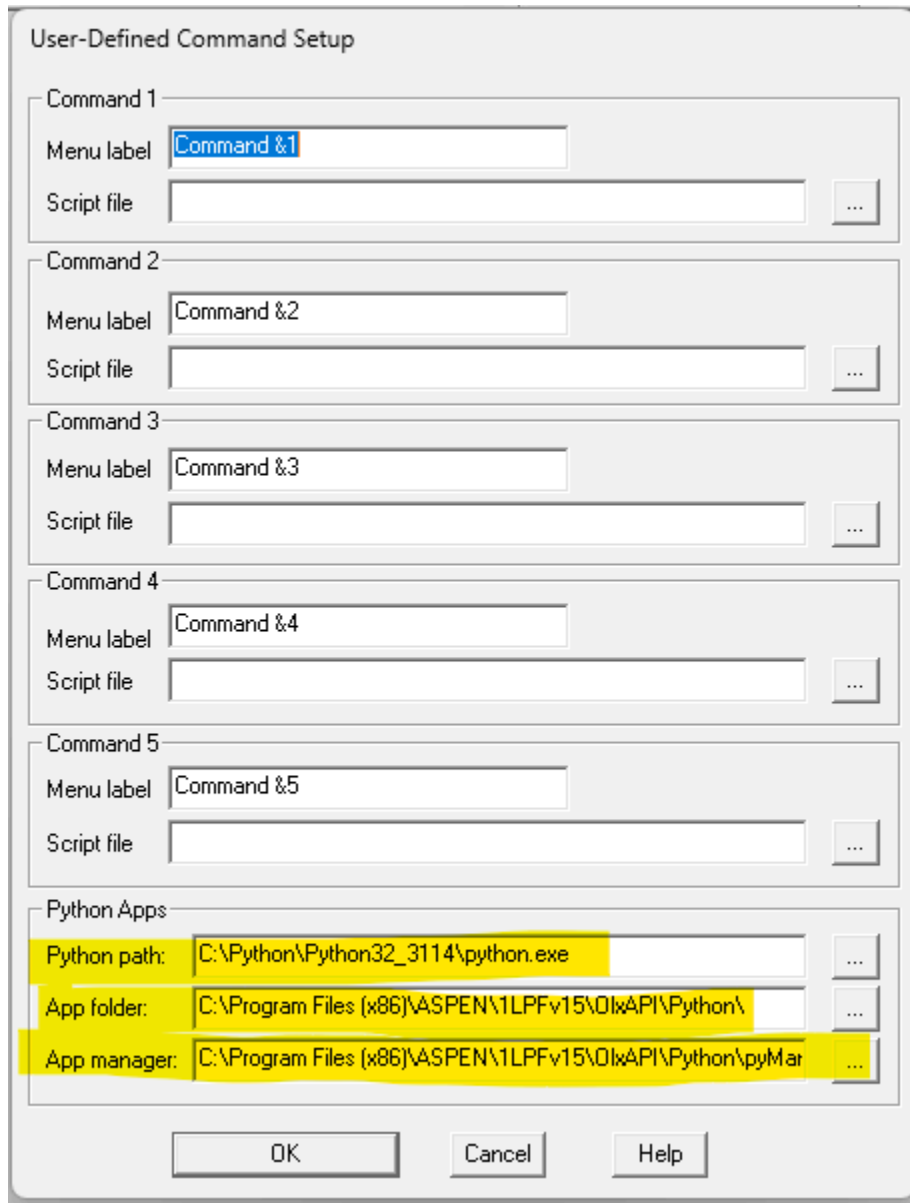
OneLiner Internal Python IDE Setup

The macro record and internal Python IDE features of OneLiner V15.8 require 32-bit Python 3.11. To enable the OIxAPI Dashboard, you will have to configure OneLiner to point to your Python installation. The configuration steps are below.

To configure OneLiner for this, first run OneLiner, then select **Tools | User-Defined Commands | Setup**



Then configure the highlighted items below:



The image shows a 'User-Defined Command Setup' dialog box with five command sections and a Python Apps section. Each command section has a 'Menu label' and a 'Script file' field. The Python Apps section has three fields: 'Python path', 'App folder', and 'App manager'. The 'Python path' field is highlighted in yellow and contains 'C:\Python\Python32_3114\python.exe'. The 'App folder' field is highlighted in yellow and contains 'C:\Program Files (x86)\ASPEN\1LPFv15\OlxAPI\Python\'. The 'App manager' field is highlighted in yellow and contains 'C:\Program Files (x86)\ASPEN\1LPFv15\OlxAPI\Python\pyMar...'. At the bottom of the dialog are 'OK', 'Cancel', and 'Help' buttons.

- **Python path** should point to the python.exe of your Python installation.
- **App folder** should point to the location of the Python scripts: Default location = C:\Program Files (x86)\ASPEN\1LPFv15\OlxAPI\Python\
- **App manager** should point to the location of the pyManager.py script: Default location = C:\Program Files (x86)\ASPEN\1LPFv15\OlxAPI\Python\pyManager\pyManager.pyw

After completing the steps above, icons for the OIxAPl Launcher and Python Macro Record functions should become visible in the OneLiner toolbar as highlighted below.

